

# TRUCK WASH - V MAX



## Technical Specifications

- Allows to clean trucks up to 14 feet high and 75 feet long
- Cycle time between 3 to 6 minutes
- Touchless technology
- Programmable with 4 different wash packages
- Increase the longevity of your truck fleet with regular washes
- Increase your brand image with truck that are always clean
- Reduces oxidant effects due to salt, chlorine agents and road film on your vehicles

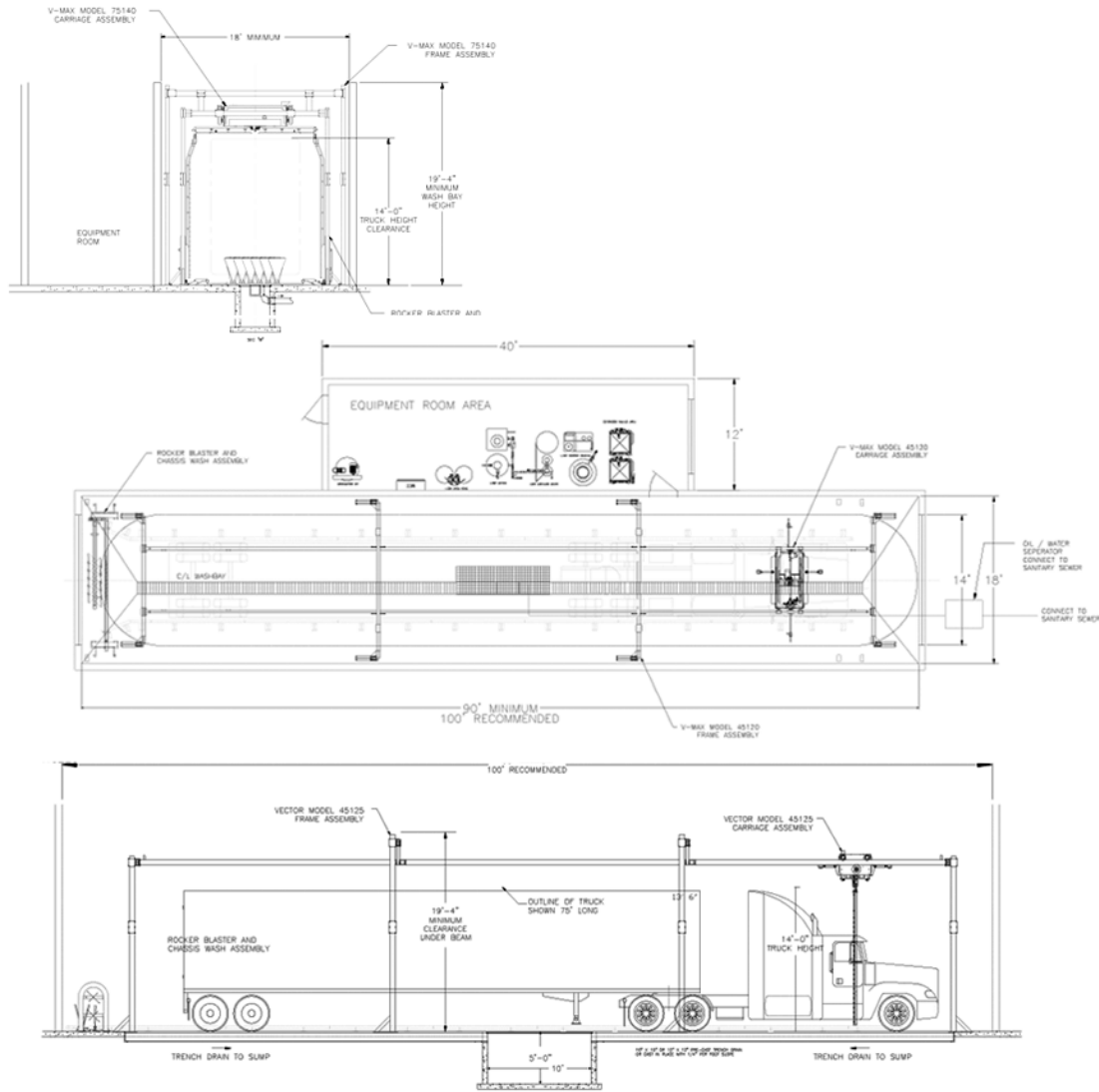


**ELAL**  
Entretien de lave-auto Laval

[www.laveautolaval.com](http://www.laveautolaval.com)

1350 rue Nationale  
Terrebonne, ( Québec )  
J6W 6M1  
Phone : (514) 990-7890  
Toll free : (800) 461-3393  
Fax : (450) 669-3455

# TRUCK WASH - V MAX



## Technical Specifications

Electricity : 200 amps @ 575V

Water : 2 in @ 40 PSI

Gas : Water heater @ 330 000 BTU

Compressed air : 20 SCFM @ 100 PSI



**ELAL**  
Entretien de lave-auto Laval

[www.laveautolaval.com](http://www.laveautolaval.com)

1350 rue Nationale  
Terrebonne, ( Québec )  
J6W 6M1  
Phone : (514) 990-7890  
Toll free : (800) 461-3393  
Fax : (450) 669-3455